

DY L300/DY L3500/DY L4000

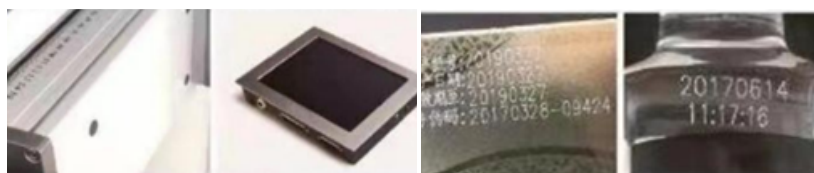
CO2 Laser Marking Machine



DY L Series Laser Marking Machine

DY L series laser marking machine adopts a laser source imported from the United States and more advanced deflection mirrors, ensuring high-speed, efficient, and stable marking quality.

The internationally leading touch screen high-speed control system has a faster marking speed and a unique dual red light focusing function, which enables faster adjustment.



Imported deflection system, laser system, perfect quality, excellent design, convenient for static use and flexible conversion of assembly line use.

Technical features

1. Integrated compact body design
2. The laser inkjet printing head can be adjusted up and down, front and back, which is more convenient to use.
3. Ultra-high-speed coding is more than twice that of ordinary laser printers.
4. Low cost, low power consumption (almost 0 materials)
5. Excellent and permanent code marking, more accurate code printing
6. The operating system specially designed for pipeline applications far better than ordinary Windows operation.
7. Strong environmental adaptability, sealing design, higher protection level
8. Extremely high reliability, stable operation without maintenance
9. Double red light focusing, saving time and effort
10. Full warranty for the whole machine, lifelong after-sales guarantee

DY L300/DY L3500/DY L4000

CO2 Laser Marking Machine

System Technical Parameters

Category	Specification
Types of laser	Laser wavelength: 10.6um
Output power	30W (35W, 45W optional)
Focal length	130mm (standard)
Maximum linear marking speed	12000mm/s
Marking parameters	
Marking range	110mm x 110mm, maximum marking range: 500x 500mm (optional)
Marking lines	Set the number of rows arbitrarily within the valid marking range
Minimum line width	0.1mm
Speed	Up to 150 m/min
Character height	0.4-70mm
Font	Single-line body, dot matrix body, TrueType font
Marking content	Text, graphics, bar code, QR code, dynamic serial number, real-time clock, TXT file, RS232 communication data, etc.
Marking angle	Any angle, four-dimensional adjustable
Operation interface	
Screen	Industrial-grade touch screen
Language	Chinese, English (can support other languages)
System	Linux
Input device	Handwriting

Working Environment

Working environment	
Protection level	IP55
Cooling	Air-cooled
Environmental temperature	1-45°C
Humidity	10%-90%, no condensation
Electrical requirements	100-240 VAC, 50/60 Hz, 0.7KW

